



Shirestones, Batch Valley, All Stretton, Church Stretton,
SY6 6JR

Shrewsbury & Country House Sales

**MILLER
EVANS**



Shirestones, Batch Valley, All Stretton,
Church Stretton, SY6 6JR

£825,000

Freehold

- A spacious and unique detached family home
- Incorporating an Annex providing living room/kitchen, bedroom and shower room
- Four bedrooms (one with dressing room), bathroom and shower room
- Open-plan living room/dining room/kitchen
- Separate spacious lounge with sliding doors to rear garden
- Utility and separate wc
- Gym/home office with double doors to garden
- Driveway providing extensive parking
- Large rear garden enjoying stunning views over the surrounding hills
- Picturesque village location



A unique five bedroom detached family home, located in the heart of All Stretton. The property offers spacious living accommodation briefly comprising; entrance porch, open-plan living/dining room/kitchen, utility room, separate wc, inner hallway, spacious lounge with door leading to a multi-functionable room currently occupied as a gym/home office. To the first floor there are four bedrooms, one with an en suite dressing room, a bathroom and shower room. The property also enjoys the added benefit of an Annex providing additional living accommodation, or potential holiday let. The annex accommodation comprises; open-plan living room/kitchen, bedroom and shower room. Driveway providing ample parking and rear garden enjoying far reaching views. The property benefits from gas fired central heating.

All Stretton is a picturesque rural village situated within the South Shropshire Hills Area of Outstanding Natural Beauty, just north of Church Stretton. Surrounded by rolling countryside and walking routes, the village is known for its peaceful setting, traditional character and attractive stone and period properties. Despite its rural feel, it remains conventionally positioned for access to nearby amenities, transport links and the wider Shropshire Countryside.







ENTRANCE PORCH

OPEN PLAN LIVING/DINING ROOM/KITCHEN

28'2" x 25'9"

Kitchen with a range of matching wall and base units

Feature log burner

Dual aspect of the South Shropshire hills

UTILITY ROOM

8'2" x 17'0"

SEPARATE WC

INNER HALLWAY

LOUNGE

15'11" x 21'8"

Log burner

Sliding doors to rear garden

HOME OFFICE / GYM

13'7" x 14'6"

French doors to rear garden.

STAIRCASE rising from inner hall to **FIRST FLOOR LANDING**



BEDROOM 1

13'8" x 19'7"

DRESSING ROOM

10'6" x 10'6"

Velux windows and access to spacious eaves storage

BEDROOM 2

11'9" x 15'5"

Large built in wardrobe

BEDROOM 3

11'7" x 15'5"

BEDROOM 4

11'0" x 8'7"

BATHROOM

Panelled bath

Wash hand basin, wc

SHOWER ROOM

Shower cubicle

Wash hand basin, wc

Velux window.



ANNEX

OPEN PLAN KITCHEN / LIVING ROOM

12'1" x 15'0"

Fitted with a range of matching wall and base units

Rear access door

BEDROOM 5

13'5" x 7'1"

SHOWER ROOM

Shower cubicle, wash hand basin, wc

GARDENS AND GROUNDS

The property is approached over a gravelled driveway providing ample parking (up to about 8 vehicles/motorhome etc).

Rear garden mainly laid to lawn with a feature stone wall, that connects to Batch Valley, there is a good sized paved patio area providing ideal seating/entertaining space. The garden enjoys views over the South Shropshire hills.

HOW TO GET THERE

When approaching from the Church Stretton office, continue along Shrewsbury Road towards All Stretton. Turn left towards Batch Valley and after some distance the property will be found on the left hand side.

Energy Efficiency Rating		Environmental Impact (CO ₂) Rating			
	Current	Potential		Current	Potential
Very energy efficient - lower running costs					
(92 plus) A			Very environmentally friendly - lower CO ₂ emissions		
(81-91) B			(81-91) B		
(69-80) C			(69-80) C		
(55-68) D			(55-68) D		
(39-54) E			(39-54) E		
(21-38) F			(21-38) F		
(1-20) G			(1-20) G		
Not energy efficient - higher running costs					
England & Wales		EU Directive 2002/91/EC		England & Wales	

IMPORTANT NOTICE

Our particulars have been prepared with care and are checked where possible by the vendor. They are however, intended as a guide. Measurements, areas and distances are approximate. Appliances, plumbing, heating and electrical fittings are noted, but not tested. Legal matters including Rights of Way, Covenants, Easements, Wayleaves and Planning matters have not been verified and should take advice from your legal representatives and Surveyor. Images may have been enhanced. This property may be subject to additional management charges.

Miller Evans is fully committed to implementing the GDPR 2018 and the Money Laundering Regulations 2017 and will at all times ensure that your personal data is held in strict accordance with the law.

DO YOU HAVE A PROPERTY TO SELL ?

We will always be pleased to give you a no obligation market assessment of your existing property to help with your decision to move.

SERVICES

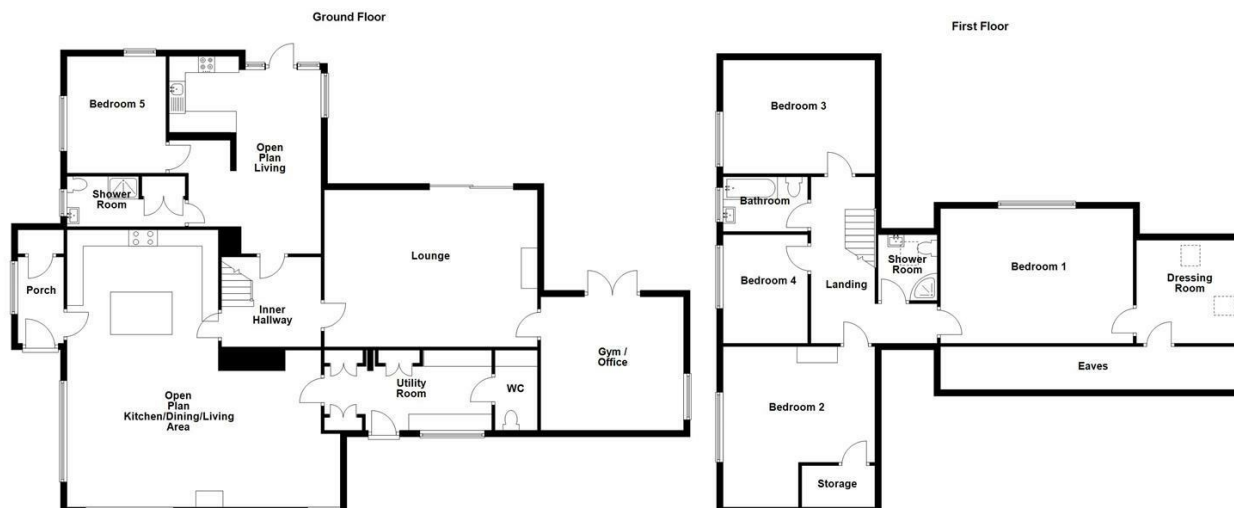
We understand that mains water, electricity, drainage and natural gas are connected to the property.

Council Tax Band : F

LOCAL AUTHORITIES

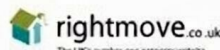
Shropshire Council
Shirehall, Abbey Foregate, Shrewsbury SY1 6ND

**MILLER
EVANS**



Total area: approx. 3275.1 sq. feet

FIND OUR PROPERTIES ON:



Residential Sales & Lettings
Eagle House, 4 Barker Street,
Shrewsbury SY1 1QJ
Tel: 01743 236800

South Shropshire Sales Office
4 The Square,
Church Stretton SY6 6DA
Tel: 01694 724700



www.millerevans.co.uk | homes@millerevans.co.uk

Members of: National Association of Estate Agents • Guild of Property Professionals • National Federation of Property Professionals

Partners: David S. Miller (FNAEA) Proprietor • Stuart Langley (FNAEA)

Associates: William Miller • Sharon L. Langley (MARLA) Consultant: David C. Evans